

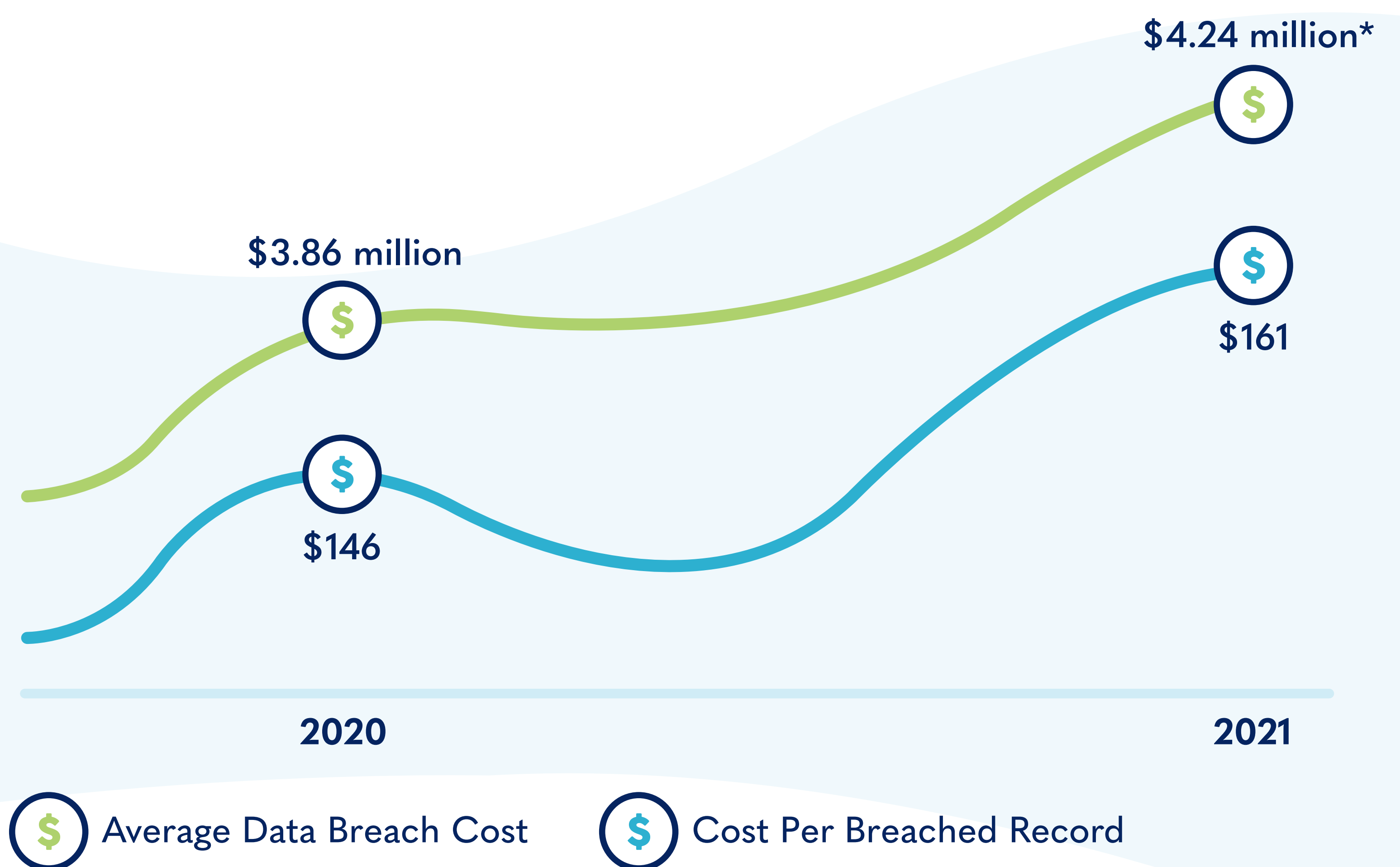
Security Is Driving Network Enhancements

New security strategies are driving network enhancements and upgrades to legacy architectures

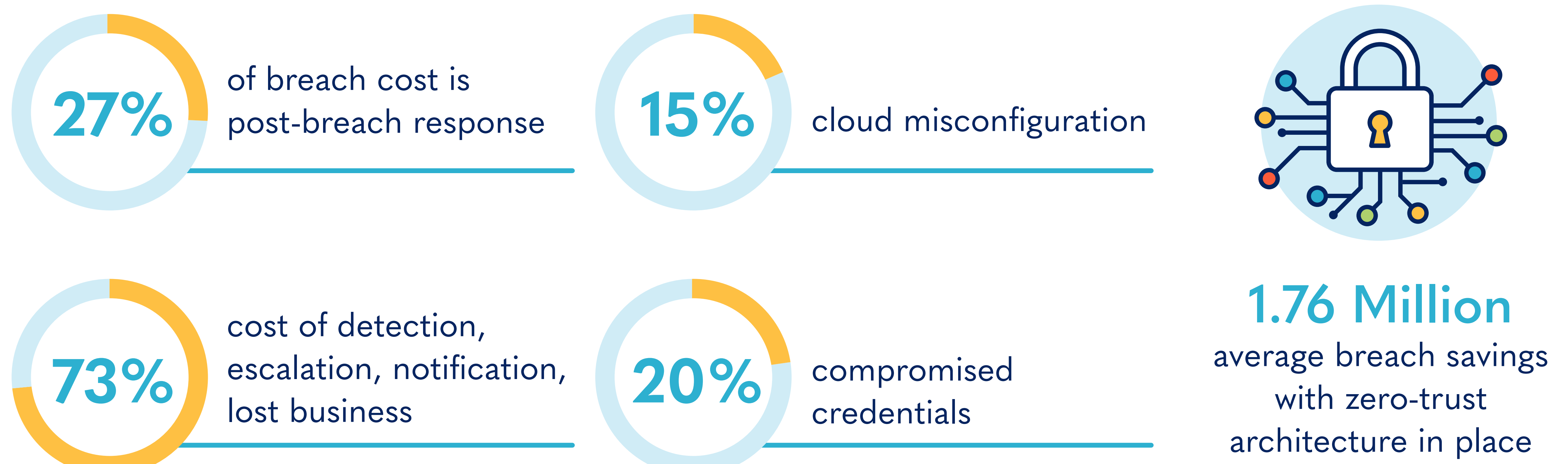
Why Now?

Risks and vulnerabilities are only getting worse, which is driving the convergence of network and security - and why network planners must take a proactive look at their network strategy.

*5.72 million for financial institutions



Why Is Security Changing?



Secure Service Edge (SSE) Is The New Normal



Zero Trust Network Access (ZTNA)

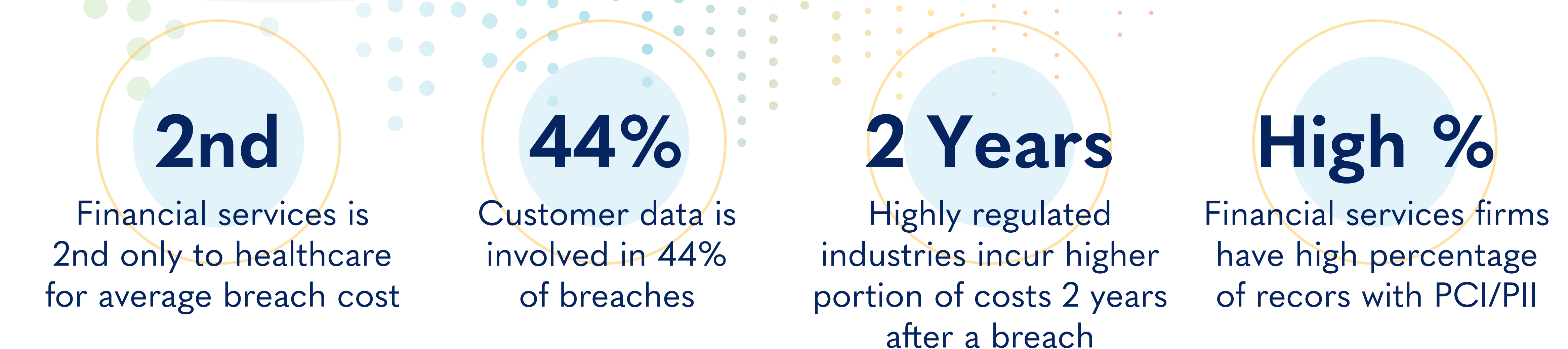


Cloud Access Security Broker (CASB)



Secure Web Gateway (SWG)

Disproportionate Impact On Financial Services



How Does Network Technology Affect Security Posture And SSE?

- Choosing network technology (Ethernet, waves, dark fiber) that reduces east-west data paths in network can help limit the scope of breaches versus mesh architectures and internet.
- Software-based orchestration offers more control over Zero-Trust, containment, and analytics without sacrificing performance.
- Device-based architectures are increasingly targeted for vulnerabilities in hardware.
- Increasing number and complexity of applications and cloud services requires underlying connections, especially to branch offices, to be robust.